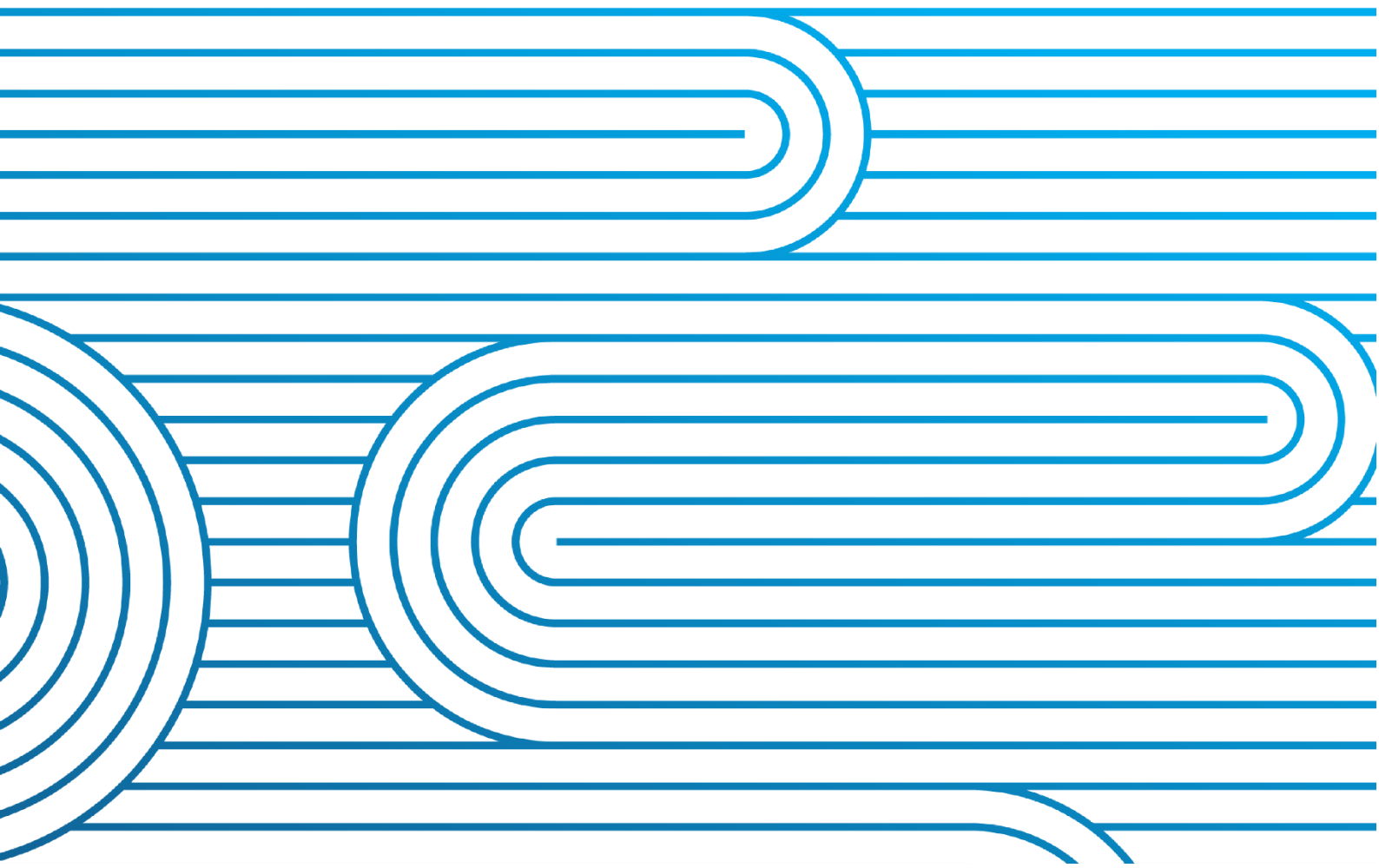


Fault Ride Through Study Assumptions

Additional Information for the Edgcumbe Region

Version: 3.1

Date: 22/06/2026



Version	Date	Change
1.0	11/02/2025	Initial Release
2.0	03/07/2025	Revision 1(Added EMT requirements)
2.1	16/04/2025	Added THI-WKM 220kV circuit to PPC Group A outages and fault locations
3.0	10/10/2025	Updated sections 4.1, 7.1 and 7.2
3.1	22/06/2026	Updated section 3.2

	Name & Position
Prepared By:	Power Systems Group
Reviewed By:	Power Systems Group

IMPORTANT

Disclaimer

The information in this document is provided in good-faith and represents the opinion of Transpower New Zealand Limited, as the System Operator, at the date of publication. Transpower New Zealand Limited does not make any representations, warranties or undertakings either express or implied, about the accuracy or the completeness of the information provided. The act of making the information available does not constitute any representation, warranty or undertaking, either express or implied. This document does not and is not intended to; create any legal obligation or duty on Transpower New Zealand Limited. To the extent permitted by law, no liability (whether in negligence or other tort, by contract, under statute or in equity) is accepted by Transpower New Zealand Limited by reason of, or in connection with, any statement made in this document or by any actual or purported reliance on it by any party. Transpower New Zealand Limited reserves all rights, in its absolute discretion, to alter any of the information provided in this document.

Copyright

The concepts and information contained in this document are the property of Transpower New Zealand Limited. Reproduction of this document in whole or in part without the written permission of Transpower New Zealand is prohibited.

Contact Details

Address: Transpower New Zealand Ltd
Waikoukou - 22 Boulcott St
PO Box 1021
Wellington
New Zealand

Telephone: +64 4 495 7000

Email: system.operator@transpower.co.nz

Website: <http://www.transpower.co.nz>

Contents

1	Introduction	5
1.1	Additional documents.....	6
2	FRT Study Purpose	7
3	System Conditions	8
3.1	System model.....	8
3.2	Network model	8
3.3	PCC groups classification.....	10
3.4	Transmission circuit outages	10
4	Local Conditions	13
4.1	Local network model.....	13
4.2	Generator model.....	13
5	Other Generation	14
6	Relevant External Conditions	14
7	Fault Conditions	15
7.1	Fault types.....	15
7.2	Fault clearance times	15
7.3	Fault locations	15
7.4	Over-voltage simulations	17
	Appendix: Site Codes	18

1 Introduction

Fault Ride-Through (FRT) is the ability of a generating unit to stay connected to the electrical grid during and following a fault disturbance, and then to restore its power output to pre-fault levels. This document provides additional information and system assumptions relevant to the Edgcumbe Region (Grid Zone 4) for the technical studies required to demonstrate compliance with the FRT requirements stipulated in EIPC Clause 8.25A(3).

The Edgcumbe region includes: Aniwhenua, Aratiatia, Atiamuri, Edgcumbe, Kawerau Geothermal, Kawerau, Lichfield, Matahina, Moko, Maraetai, Mt. Maunganui, Nga Awa Purua, Ngatamariki, Ohakuri, Ohaaki, Ohinewai, Poihipi, Rotorua, Tauhara, Tauranga, Te Mihi Geothermal, Te Matai, Tarukenga, Waiotaha, Wheao, Whakamaru, Waipapa, and Wairakei. For a list of site code abbreviations relevant to this region, see the appendix. The contents of this document apply to any asset that will be connected within the Edgcumbe region, which is shown geographically and as a single line diagram in Figure 1-1 and Figure 1-2.

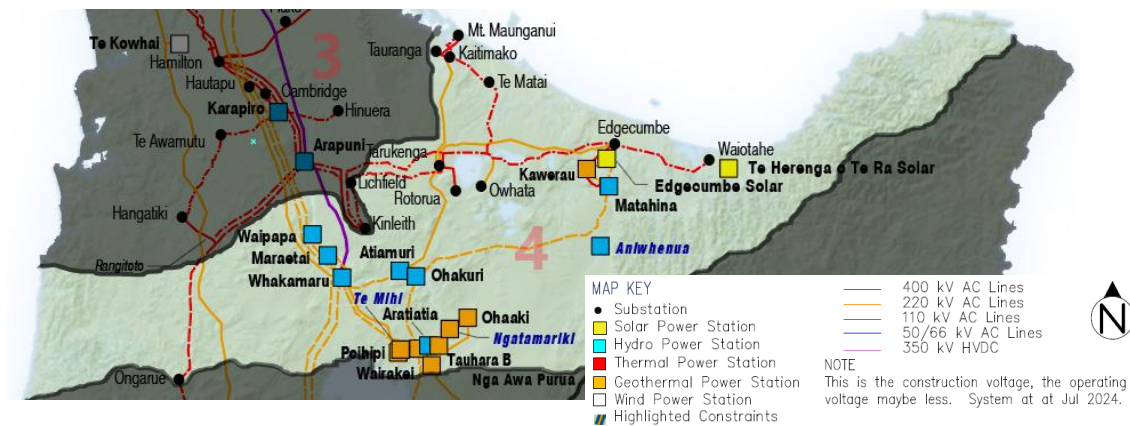


Figure 1-1 (above): Geographic representation of Edgcumbe Region (Grid Zone 4)

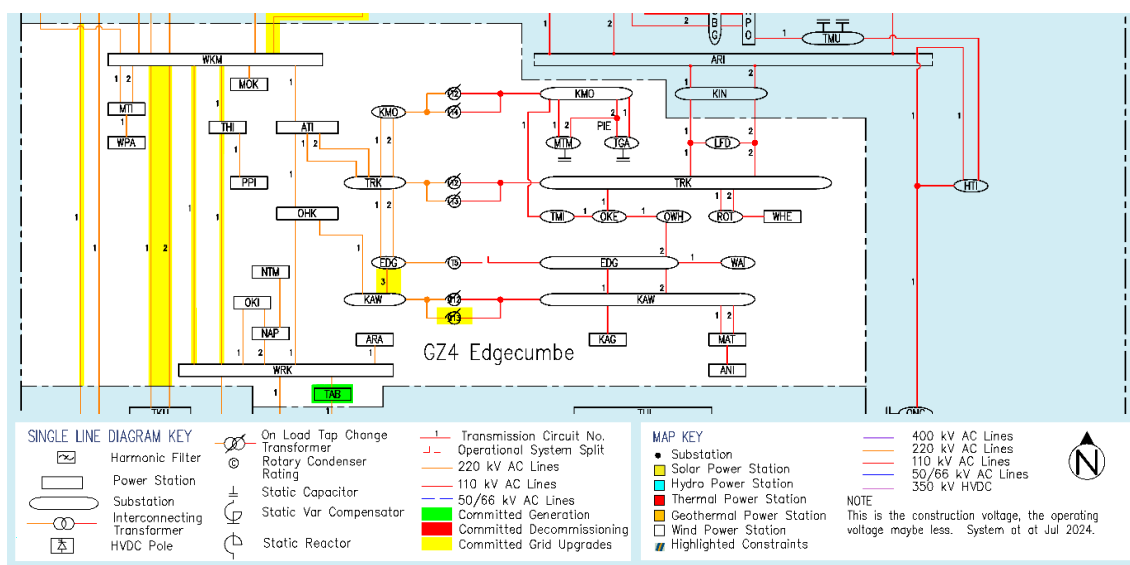


Figure 1-2: Single line diagram of Edgcumbe Region (Grid Zone 4)

This document includes region-specific information and historical voltage trends to support you to complete your studies with accurate region-specific system conditions. You will also find an appropriate set of planned outages and corresponding generation dispatches, as well as information on any changing system conditions in the region, including the commissioning or de-commissioning of both transmission and generation assets.

Note that planned outages (section 3.5) and fault locations (section 7.3) to be studied will depend on the point of common coupling (PCC) groups. These have been introduced based on the location of the stations, with each station within the region assigned to a specific PCC group. You can find these outlined in section 3.4.

If your asset has not started commissioning after one year after the System Operator has received and accepted a technical study, you may need to undergo it again to reflect further changes to the power system that could affect the asset's fault ride through capability.

1.1 Additional documents

Transpower's [GL-EA-953](#) document outlines the general requirements for a new generating station's connection studies, including the FRT study. The System Operator expects the Asset Owner to be familiar with that document as it outlines relevant information such as steps for model and study care preparation, as well as study scope and assessment criteria.

The following Transpower documents are also relevant to this assessment:

- [2024 System Security forecast](#)
- [Transpower EA EMI DlgSILENT NIPS case](#)
- [PSCAD Electromagnetic Transients \(EMT\) network model¹](#)
- [Special protection schemes](#)

¹ PSCAD network model will be provided by the SO upon request

2 FRT Study Purpose

The System Operator expects an FRT study to have the following outcomes:

- The generating units meet all the assessment criteria whilst riding through the voltage envelopes as prescribed by the Code.
- The fault ride through strategies are detailed.
- Any non-compliant, or potentially non-compliant, behaviours are identified and explained.
- There is confirmation that no protection or control settings at the generating station would result in a breach of the fault ride through requirements. If there is any shortfall of asset capability to meet the Code requirements, you shall discuss it with the System Operator.

3 System Conditions

3.1 System model

You should perform the FRT assessment based on the latest available design parameters of your asset.

- If you modify any controller parameter after submitting the FRT report, i.e. during or after the EIPC Compliance tests, then you must also provide the System Operator with updated parameters.
- If there is a material change in the settings that would significantly alter the FRT performance, you may need to update and resubmit the study to the System Operator.

3.1.1 Minimum and maximum short circuit level conditions

It is acceptable to use the winter/summer peak and light load summer scenarios provided in the Electricity Market Information (EMI) dataset to prepare the maximum and minimum short circuit level study scenarios. As a minimum, the studies should be carried out for the planned commissioning year. Your study should also include any significant future local changes if the EMI case contains that relevant data.

3.2 Network model

The network model used for the connecting assets in the FRT study should include an accurate representation of:

- all generation units
- generator transformers
- the internal collector network
- the grid-connected transformer
- all controllers for Inverter Based Resources, including the Plant controller, and Inverter controller. These models should include representation of any Phase Lock Loop (PLL) controls and all current controls, and
- any associated controls or equipment to be installed in the facility.
- Any control strategies that are designed to assist in riding through system fault used in IBRs

This model must align with the available single-line diagram submitted in the Asset Capability Statement (ACS). An aggregated generating station model is acceptable for wind, solar and battery generating stations that shall include a collector system equivalent network model,

as long as the model accurately reflects the performance expected of the station (see section 4.2).

Calculate the Effective Short Circuit Ratio (ESCR) at the PCC under the lowest short circuit system conditions using the latest EMI study case, the lowest short circuit system conditions are likely to be during an outage.

For synchronous generators you will need to undertake fault ride through studies with PowerFactory RMS simulations.

For Inverter Based Resources (IBR) you will need to undertake fault ride through studies with PowerFactory RMS simulations as an initial screening to cover all generation scenarios, fault types and asset operation conditions agreed with System Operator. You must then undertake a PSCAD EMT study to assess a selection of study cases identified in the screening process as agreed with System Operator.

3.3 System voltages

Figure 3-1 demonstrates the grid voltage profiles over the period January to December 2024 in the Edgcumbe Region.

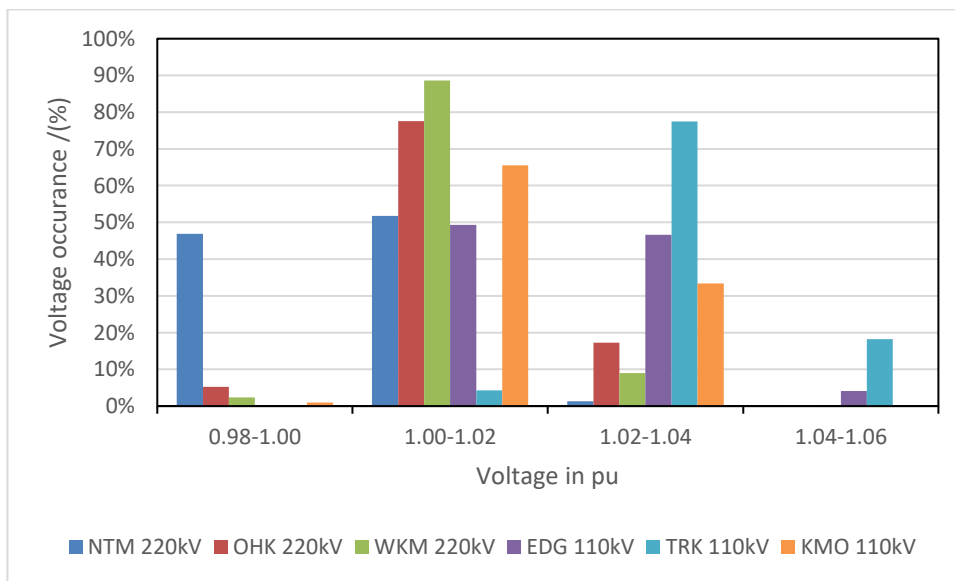


Figure 3-1: Voltage profile of NTM 220kV, OHK 220kV, WKM 220kV, EDG110kV, TRK 110kV and KMO110kV from Jan to Dec 2024

The above graph indicates that 220kV voltage in NTM was mostly between 0.98-1.02pu. OHK and WKM 220kV voltages were between 1.0-1.02pu most of the time. Further, this shows that the regions 110kV buses operated above 1.0pu throughout the year. Asset Owners should perform fault ride through studies with voltage targets for the region within these ranges, highlighting any impact the new connection may have on the local voltage.

3.4 PCC groups classification

The System Operator has grouped 220kV and 110kV stations within the region as follows. This should help streamline the outages and fault locations to be studied based on the PCC. Accordingly, an asset connecting to any voltage level at these stations will belong to a particular PCC group.

PCC Group A (220kV): WRK, NAP, OKI, NTM, TAB, ARA, PPI, THI, OHK

PCC Group B (220kV): WKM, MTI, WPA, MOK, ATI

PCC Group C (220kV): TRK, EDG, KAW, KMO

PCC Group D (110kV): KAG, EDG, WAI, KAW, MAT, ANI, OWH

PCC Group E (110kV): KMO, MTM, TGA, ROT, WHE, TMI

PCC Group F (110kV): LFD, TRK

Any asset connecting to either 66kV, 33kV or lower voltage belongs to 220kV PCC group and 110kV PCC group mentioned above if particular 66kV or 33kV bus is fed directly via 220kV or 110kV bus respectively.

3.5 Transmission circuit outages

Planned outages are regular occurrences on the grid and the fault ride through study must include assessment of performance during outages. The System Operator expects outages to result in reduced system strength at the point of connection, which can make the fault ride through more difficult to achieve. We will maintain N-1 security during planned or forced outages, and this may require special protection schemes (SPS) or pre-contingent constraints. The generation dispatch used in the outage studies should not result in unacceptable overloading of any circuit for a further contingency. If you need advice on any relevant special protection schemes (SPS) or on specific circuit overload capabilities, contact the System Operator.

You should consider the outages in Table 3-1 and Table 3-2 below during your FRT assessment. Table 3-1 outlines the outages to be considered during the studies based on 220kV PCC groups A, B and C, while Table 3-2 outlines the outages to be considered during the studies based on 110kV PCC groups D, E and F as defined in section 3.4.

For 110kV PCC connections, you must also include the outage group associated with the nearest 220kV bus.

Table 3-1: Outages under 220kV PCC groups A, B and C

PCC Group A	PCC Group B	PCC Group C
NAP-WRK circuit 2	OTA-WKM circuit 1	ATI-TRK circuit 1
NAP-OKI circuit 2	PAK-WKM circuit 1	KMO-TRK circuit 1
OKI-WRK circuit 1	OHW-WKM circuit 1	EDG-TRK circuit 1
OHK-WRK circuit 1	WKM-WRK circuit 1	EDG-KAW circuit 3
THI-WRK circuit 1	TKU-WKM circuit 1	KAW-OHK circuit 1
WKM-WRK circuit 1	THI-WKM circuit 1	KMO T2
RPO-WRK circuit 1	ATI-WKM circuit 1	TRK T2
TAB-WRK circuit 1	HAM-WKM circuit1	KAW T12
WHI-WRK circuit 1	HAM-OHW circuit 1	
KAW-OHK circuit 1	ATI-OHK circuit 1	
THI-WKM circuit 1		
KAW T12		

Table 3-2: Outages under 110kV PCC groups D, E and F

PCC Group D	PCC Group E	PCC Group F
EDG-KAW circuit 3	KMO-TMI circuit 1	ARI-KIN circuit 1
EDG-KAW circuit 1	TIM-OKE-OWH-TRK circuit 1	KIN-LFD-TRK circuit 1
KAW-MAT circuit 1	KMO-MTM circuit 1	TIM-OKE-OWH-TRK circuit 1
EDG-OWH circuit 2	KMO-TGA circuit 1	TRK-ROT circuit1
KMO-TMI circuit 1	KMO T2	TRK T2
KAW T12		

The outages detailed above are expected to identify any problematic network configurations up to the post-fault N-1-1 condition. However, the Asset Owner remains responsible for identifying any onerous outage scenarios that result in an inability to ride through a system fault. To this end, you may choose to carry out a wider range of outage studies.

3.5.1 EMT studies

EMT studies should be conducted for a range of outages, with a focus on the most critical scenarios, typically the most onerous will be outages that result in the lowest short circuit ratios at the PCC. Outages in Table 3-1 and Table 3-2 can be used for screening through the SCR, in some cases not all the outages will need to be studied in the EMT case. If the point of connection to the grid is at 66 kV, 33 kV, or a lower voltage level, the outage of at least one supply transformer feeding the PCC must also be studied in addition to the above outages.

4 Local Conditions

4.1 Local network model

The network topology for Transpower assets is depicted in the EMI study case. Where there is a complex local network that can affect the study results, Asset Owners should acquire this data from the network owner and add this to the study. An equivalent representation of a local network may be sufficient.

A significant local network would, for example, be a network connected between the nearest Transpower asset and the generation site, or a network that could provide a parallel or alternative export path during any potential operation of the generation. A local network with generation that also feeds into a common connection at a Transpower asset may also need to be included.

The load model in the 2024 EMI case is set with constant impedance modelling in the transient studies, this is an optimistic assumption for the load behaviour. It is prudent to perform fault ride through studies with less optimistic load modelling (such as modelling the real power load component as constant current, or modelling both real and reactive load components as 50% constant current, 50% constant impedance) as a sensitivity.

4.2 Generator model

The high-level details for modelling the generation facility are available in the [GL-EA-953](#) guideline. If you use an aggregated model instead of modelling individual units, you must demonstrate that the aggregated model accurately represents the characteristics of the entire facility at the connection point. To this end, you must provide any relevant underlying assumptions.

4.2.1 Active power output of the generating unit/ station

The Asset Owner should conduct an FRT study at both 80%, and 100% of the maximum continuous output (MCO) of the generation. However, Inverter based generation is also expected to be studied at 20% of its MCO with all inverters are in service. Asset Owner can limit the EMT studies to two most onerous generation outputs.

The System Operator expects you to identify and study any power output conditions below maximum generation that may be onerous for FRT studies. A simple example of this would be a site with more than one connection to the grid, where, during an outage, the output through one or more of those connections may surpass its output under intact conditions, despite the total station output being lower.

If a facility has more than one operating mode, then you must study the FRT performance of the facility in all its configurations. For example, battery or hybrid connections must include import, export and idling modes.

4.2.2 Reactive power output of the generating unit/station

You must identify the reactive power capability at the connection point for the expected grid voltage range. To demonstrate successful fault ride through, studies should include the expected operation as well as identify the most onerous pre-fault reactive power dispatch conditions for both lagging and leading power factors.

Further, for a synchronous generating station, you should carry out sensitivity studies to assess the performance of generating units when operating near their under-excitation and over-excitation limits.

All nearby generating stations should be dispatched to manage their respective target bus voltages within an acceptable operating range, typically between 0.98- 1.05pu. Bus voltage profiles provided in Figure 3-1 (see section 3.3 above) serve as a starting point to configure the study cases. Fault ride through studies should include a voltage of 1.00p.u. at the point of connection. You should also perform sensitivity studies at the most common voltage levels expected at the PCC to reflect the existing operating voltage range as shown in Figure 3-1, allowing for any impact of the new connection.

5 Other Generation

Geothermal units in the region operate as baseload generation and should usually be retained online to maximise generation wherever possible. Outages of the Nga Awa Purua, Te Mihi and Tauhara generation should be considered.

The hydro units connected closely to Wairakei or Whakamaru (e.g. at Aratiati, Atiamuri, Whakamaru, Maraetai and Rangipo) are highly dispatchable. You can scale these as required. If additional adjustments are required, wind generation outside the study area or DC flow can also be scaled.

A 115MW solar plant plans to connect to the Edgecumbe 220kV bus in 2026. Sensitivity studies for connections in PCC Groups C or D (as identified in section 3.4) should make note of this.

6 Relevant External Conditions

The System Operator requires Asset Owners to ensure that permanent splits are enabled during the studies, particularly those relevant to Edgecumbe region. These are outlined in the [Appendix A: grid configuration - SSF 2024](#).

7 Fault Conditions

The studies to be documented are not simply be the product of all various faults, outages and system conditions identified below. FRT study should identify and focus on the most difficult fault ride through conditions.

7.1 Fault types

The study can demonstrate fault ride through capability with three-phase balanced faults to ground and single-phase to ground faults with zero impedance. To clear the fault, remove faulted circuits from the system after the designated fault clearance time mentioned in the next section (7.2).

FRT studies should also include failed auto-reclose scenarios. Auto-reclose is enabled by default on 220kV transmission lines and will re-close onto 3 phase faults. Default reclose times of 1 second should be applied.

Further, the System Operator suggests to detail the fault duration and retained voltage at the PCC as stipulated in section 4.6.4 in [GL-EA-953](#) to demonstrate fault ride through performance in compliance with Code clause 8.25A.

7.2 Fault clearance times

For the specific faults specified in **Error! Reference source not found.** and Table 7-2 below, use the following durations:

- **220kV faults:** 120ms; while the close in end to a circuit fault is likely to clear earlier than 120ms, this is the currently designed guaranteed clearance time and should be applied at both ends.
- **110kV faults:** although target clearance time is 120ms for Zone 1, the EIPC Benchmark Agreement design fault clearance time allows 200ms for 110kV circuits. Therefore, we recommend you use 200ms for the 110kV circuit faults.
- **66 kV faults:** EIPC Benchmark Agreement design fault clearance time allows 200ms
- **33 kV faults:** fault clearance times can be assumed as up to 1000ms.

7.3 Fault locations

We have listed the faults to be studied under each 220kV and 110kV PCC groups in Table 7-1 and Table 7-2 respectively. Asset Owner remains responsible for identifying the onerous fault locations that result in an inability to ride through a system fault under each PCC group.

For 110kV or lower voltage connections within PCC groups D, E or F, you should also include the faults associated with the nearest 220kV bus (PCC group). For example, if a new connection (NTM OEC 5) belongs to PCC group A, you should study faults under PCC group A in Table 7-1. However, for a new connection at KAW 110kV bus, you should study the faults under the PCC group C in Table 7-1 in addition to faults under PCC group D in Table 7-2.

Table 7-1: Fault cases to be studied under each 220kV PCC groups; A, B and C

PCC Group A	PCC Group B	PCC Group C
NAP-WRK circuit 2	OTA-WKM circuit 1	ATI-TRK circuit 1
NAP-OKI circuit 2	PAK-WKM circuit 1	KMO-TRK circuit 1
OKI-WRK circuit 1	OHW-WKM circuit 1	EDG-TRK circuit 1
OHK-WRK circuit 1	WKM-WRK circuit 1	EDG-KAW circuit 3
THI-WRK circuit 1	TKU-WKM circuit 1	KMO T2
WKM-WRK circuit 1	THI-WKM circuit 1	TRK T2
RPO-WRK circuit 1	ATI-WKM circuit 1	KAW T12
TAB-WRK circuit 1	HAM-WKM circuit1	
WHI-WRK circuit 1	HAM-OHW circuit 1	
KAW-OHK circuit 1	OHK-WRK circuit 1	
THI-WKM circuit 1	ATI-OHK circuit 1	
	ATI-TRK circuit 1	

Table 7-2: Fault cases to be studied under each 110kV PCC groups; D, E and F

PCC Group D	PCC Group E	PCC Group F
EDG-KAW circuit 3	KMO-TMI circuit 1	ARI-KIN circuit 1
EDG-KAW circuit 1	TIM-OKE-OWH-TRK circuit 1	KIN-LFD-TRK circuit 1

MAT-KAW circuit 1	KMO-MTM circuit 1	TIM-OKE-OWH-TRK circuit 1
EDG-OWH circuit 2	KMO-TGA circuit 1	TRK-ROT circuit1
TIM-OKE-OWH-TRK circuit 1	KMO T2	TRK T2
KAW T12		

The assessment should also simulate faults with the outages defined in section 3.4 to confirm the FRT performance during outage conditions.

You should select fault locations on the line circuits at both ends of the line, not at intermediate points.

FRT studies should also include failed auto-reclose scenarios. Auto-reclose is enabled by default on 220kV transmission lines and will re-close onto 3 phase faults. Default reclose times of 1 second should be applied.

The System Operator expects you to specify islanding protection separately; no islanding analysis is expected in these studies.

7.3.1 EMT studies

EMT studies should be a subset of the RMS studies carried out. The selection of fault cases should include the most onerous cases identified in the RMS studies and be sufficiently comprehensive to demonstrate the expected FRT capability. A minimum of three distinct fault types must be studied to ensure a robust assessment of system performance.

If EMT results show significant differences to RMT results, the scope of EMT studies should be expanded to provide sufficient evidence that the required FRT performance will be achieved.

7.4 Over-voltage simulations

Over-voltage situations are unusual for the Central North Island. These are typically associated with the unexpected loss of significant load. Therefore, you could study over-voltage ride through by simulating load shedding within the Edgecumbe region (without a frequency event) or using a tripping of fictitious capacitor. We recommend that you simulate an over-voltage scenario using a summer trough case.

Appendix: Site Codes

Abbreviation	Full Name
ANI	Aniwhenua
ARA	Aratiatia
ARI	Arapuni
ATI	Atiamuri
EDG	Edgecumbe
HAM	Hamilton
KAG	Kawerau Geothermal
KAW	Kawerau
KIN	Kinleith
LFD	Lichfield
MAT	Matahina
MOK	Mokoi
MTI	Maraetai
MTM	Mt. Maunganui
NAP	Nga Awa Purua
NTM	Ngatamariki
OHK	Ohakuri
OKI	Ohaaki
OWH	Ohinewai
PPI	Poihipi
RPO	Rangipo
ROT	Rotorua
TAB	Tauhara
TGA	Tauranga
THI	Te Mihi Geotherma
TMI	Te Matai
TRK	Tarukenga
WAI	Waiotaha
WHE	Wheao
WKM	Whakamaru
WPA	Waipapa
WRK	Wairakei

